

Italic 1: Geography, Genetics, Archaeology, Language Ecology



Map by Nii Tontisirin

Archaeology

	Northern Italy	Central Italy	Southern Italy
Chalcolithic (3600-2200)	Remedello (3350-2500) Po Valley (Ötzi)	Rinaldone (3600-2870) Laterza (2820-2620) Ortucchio (2670-2130) Latium, Etruria	Gaudo (3150-2300) Campania
Bronze Age I (2200-1650)	Polada (2200-1500) Lombardy, Venezia	Grotta Nuova (1700-1500)	Proto-Apennine B
Middle Bronze Age	Terramare (1700-1150) Emilia	Apennine	
Bronze Age II (1300-900)	Proto-Villanovan		
Iron Age	Atestine	Villanovan Latiale	

Chalcolithic Cultures



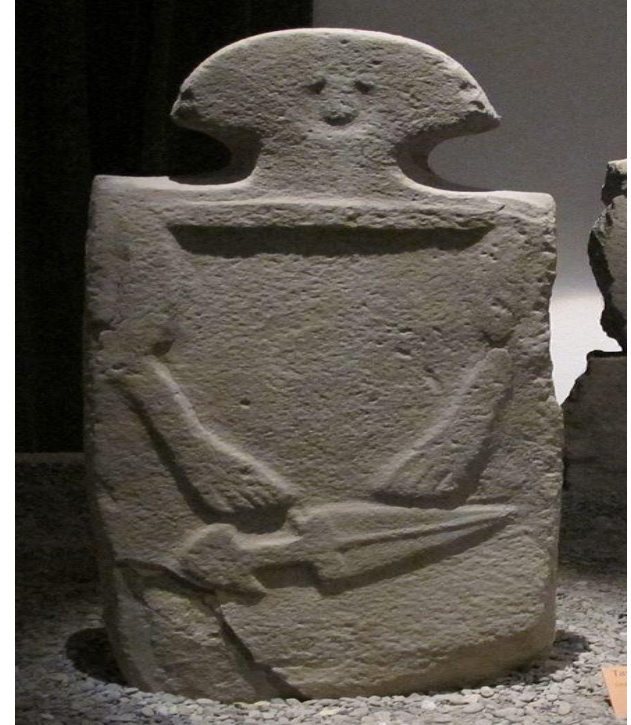
Remedello

Rinaldone

Gaudò

Remedello and Rinaldone

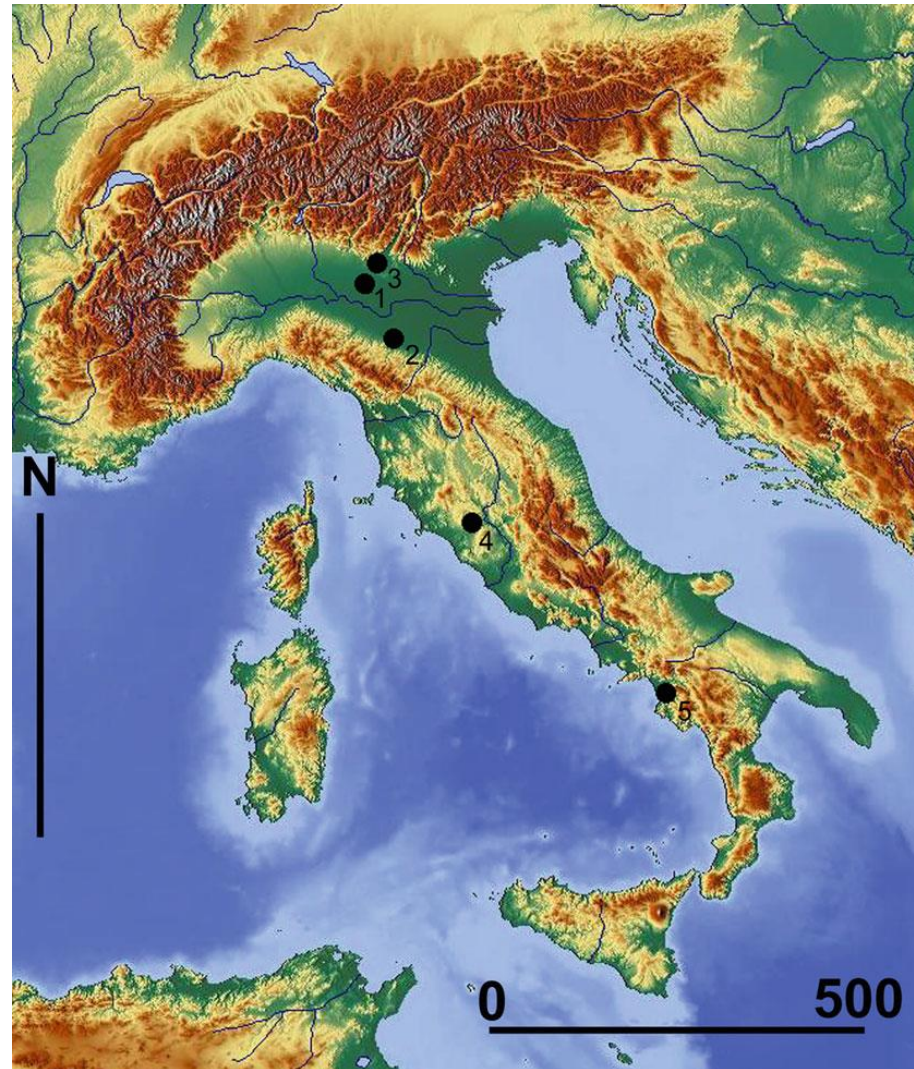
- Remedello Sotto type site near Brescia in Lombardy;
- Rinaldone in Viterbo, Lazio
- Weapons in some burials (copper or bronze daggers, chert arrowheads, stone battle-axes)
- Statue from Taponecco in Tuscany with Remedello type dagger



Remedello burial crouched on left side.



Distribution map of the Italian Chalcolithic cemeteries of Remedello-Sotto (n. 1), Spilamberto (n. 2), Rocca di Manerba (n. 3), Rinaldone (n. 4), and Gaudo (n. 5) (Drawing by P. Biagi) Biagi 2023.



Polada culture

- Lakeside dwelling built on piles (palafitte)

Reconstruction from Molina di Ledro



Polada Culture

- Single inhumations with the dead deposited in flexed position and orientated according to sex (cf. Yamnaya supine, flexed, single)
- Brotlaibidol (Oggetti enigmatici) (ca. 2050-1400) stone or clay tablets with impressed geometrical shapes; also found in SW Germany, and on the middle and lower Danube region. Upper right: from Polada culture; lower right: from Mangolding, Germany.



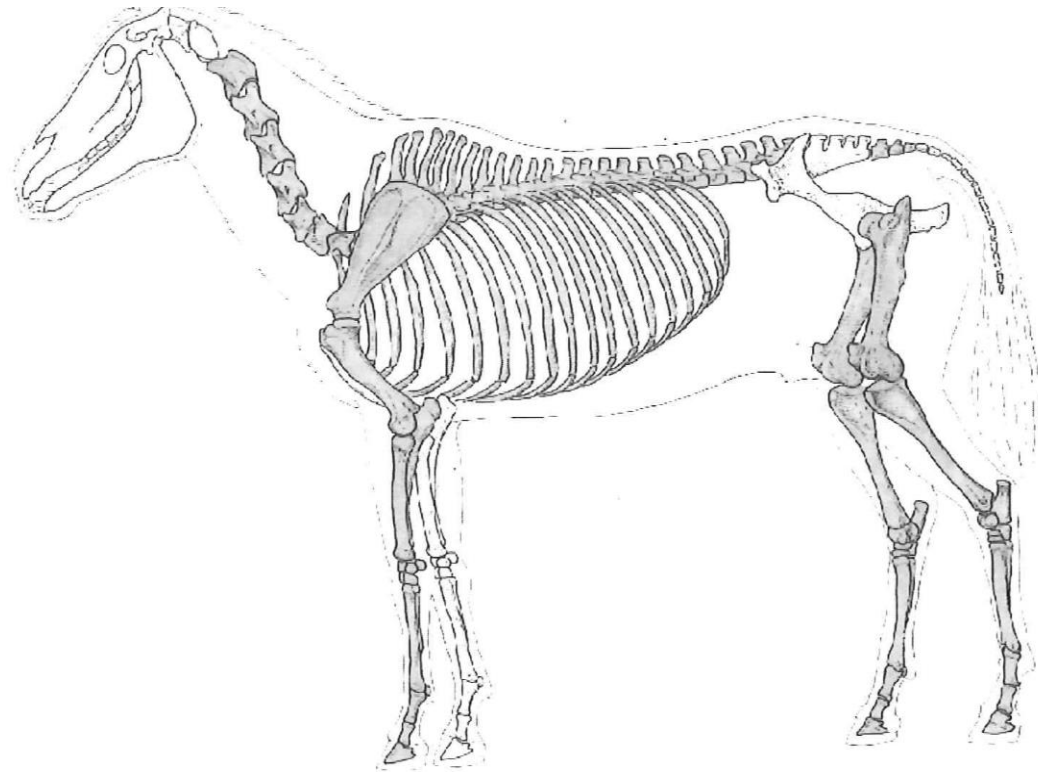
A burial group at Casinalbo urnfield Terramare site south of Po; from Cavazzuti 2022.



Bell Beaker in Italy



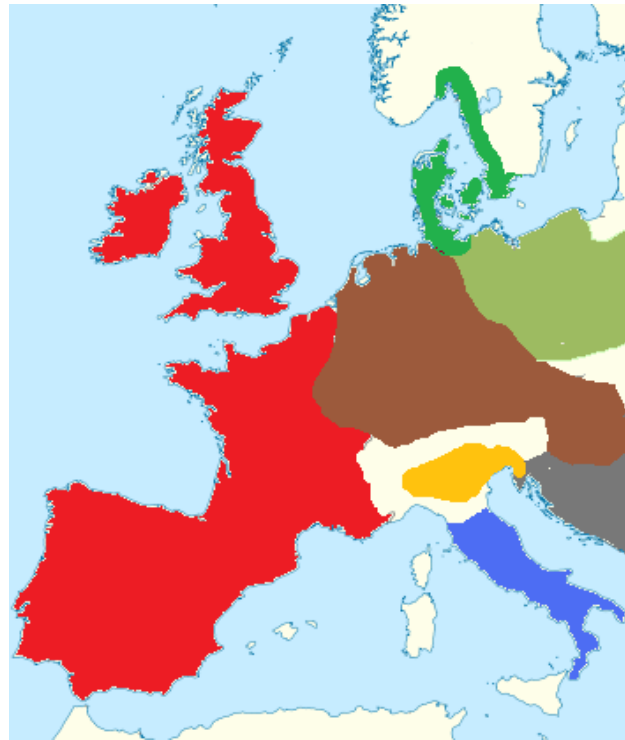
First evidence for domesticated horse in Italy



Bronze Age and Iron Age Cultures of Italy



Terremare



Appennine



Proto-Villanovan

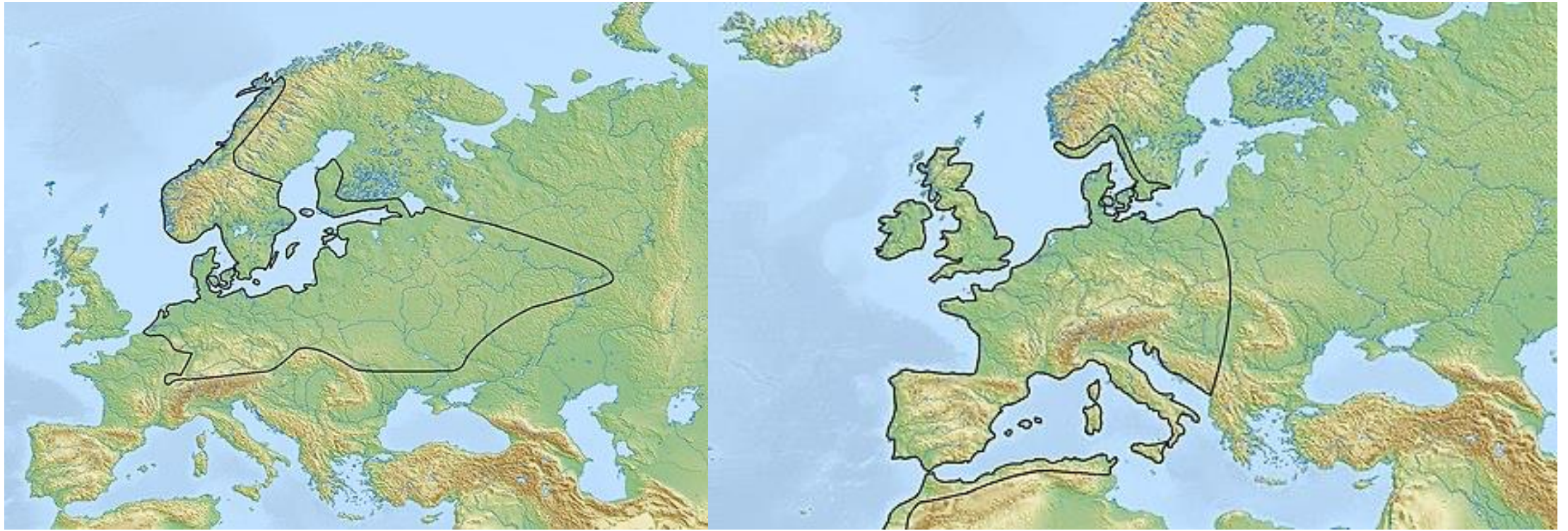
Villanovan Sites





Biconical urn from
Tarquinia 9th-8th cent.

Corded Ware (L) and Bell Beaker 2700-2000 (R)



Corded Ware Artifacts



Bell Beaker assembly from Spain



The Etruscan-derived Oscan Alphabet

Α, a

Β, b

Γ, g

Δ, d

Ε, e

Ϛ, v

Ϝ, z(= ts)

Ϟ, h

ι, i

κ, k

λ, l

μ, m

ν, n

π, p

ρ, r

σ, s

τ, t

υ, u

Ϙ, f

ϙ (ϙ κ), í

ϛ, ú

Map showing the location of the Volsci, Marsi, Aequi (or Aequicoli), and the Hernici



Some Body Parts

Gloss	PIE	Latin	Oscan	Umbrian
BODY	*k ^w erp-	<i>corpus</i>	?	?
SKIN	*ke _u h _x -	<i>cutis</i>	?	?
FLESH	*mēmso-	<i>carō, carnis (membrum)</i>	? (<i>carneis</i> 'part')	? (<i>karu</i> 'part')
HAIR	*h _x re _u m _ŋ	<i>capillus/pilus</i>	?	?
BEARD	*b ^h ard ^h eh ₂	<i>barba</i>	?	?
BLOOD	*h ₁ es _ŕ	<i>assaratum/sanguis</i>	?	?
BONE	*h ₂ ost-	<i>os, ossis</i>	?	?
BACK		<i>dorsum/tergum</i>	?	?
HEAD	*k ^{er} h ₂ s	<i>caput (cerebrum)</i>	?	?
EYE	*h ₃ ok ^w -	<i>oculus/ fēr-ōx</i>	?	?
EAR	*h ₂ e _u s-	<i>auris</i>	?	?
NOSE	*nas-	<i>nāsus</i>	(Nasō?)	?
MOUTH	*h ₁ eh ₃ -es	<i>ōs</i>	?	?
LIP	*IVb-	<i>labrum</i>	?	?
TONGUE	*d _ŋ ĝ ^h uh ₂ -	<i>dīngua</i>	<i>fanguam</i>	?
TOOTH	*h ₁ dont- ~ *h ₁ d _ŋ t-	<i>dēns, dentis</i>	<i>dúnteis</i>	?
NECK	*k ^w olso-	<i>collum</i>	?	?
ARM		<i>bracchium</i>	?	?
ELBOW		<i>cubitus</i>		
HAND	*ĝhes _ŕ	<i>manus (hīr)</i>		manf/Pic. manus
FINGER		<i>digitus</i>	?	?
NAIL	*h ₃ hog ^{wh} -	<i>unguis</i>	?	?

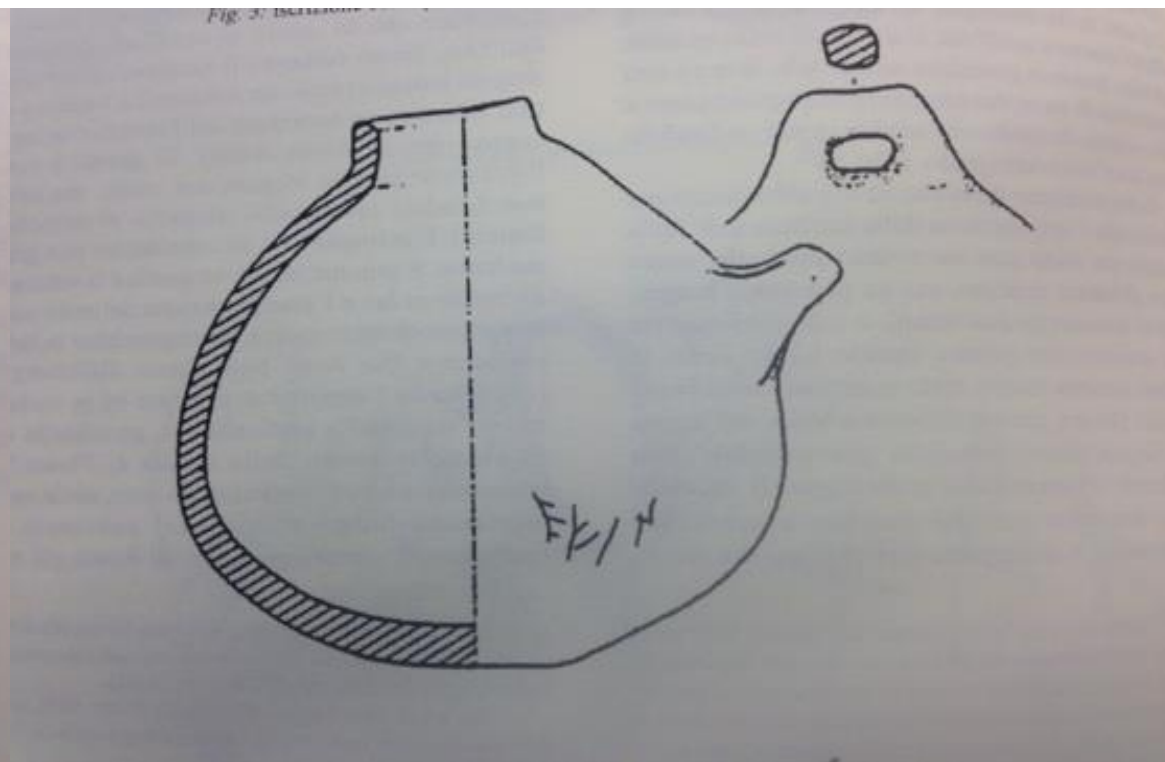
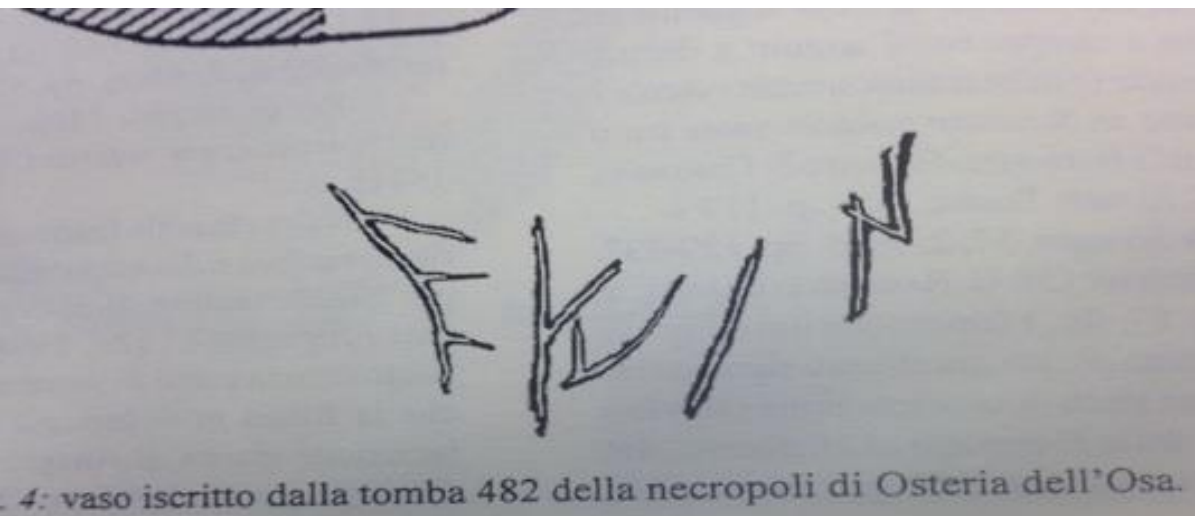
Family Relationships

	Latin	Oscan	Umbrian	Picene	Venetic
FATHER	<i>pater</i>	patir	<i>iuepatre</i> (d.s)	patereih (d.s)	<i>pater</i>
MOTHER	<i>māter</i>	maatreís (g.s.)	<i>matres</i> (g.s.)	matereih (d.s.)	?
BROTHER	<i>frāter</i>	fratrúm (g.p)	frateer (n.p)		vhратere.i.
SISTER	<i>soror</i>	?	?		?
SUN	<i>filius</i>	puklum (a.s.)	<i>fel(is)</i> (← Lat.)	puqloh (d.s)	?
DAUGHTER	<i>filia</i>	fuutír	?	?	?
GRANDFATHER	<i>avus</i>	?	?	?	?
GRANDMOTHER	<i>avia</i>	?	?	?	?

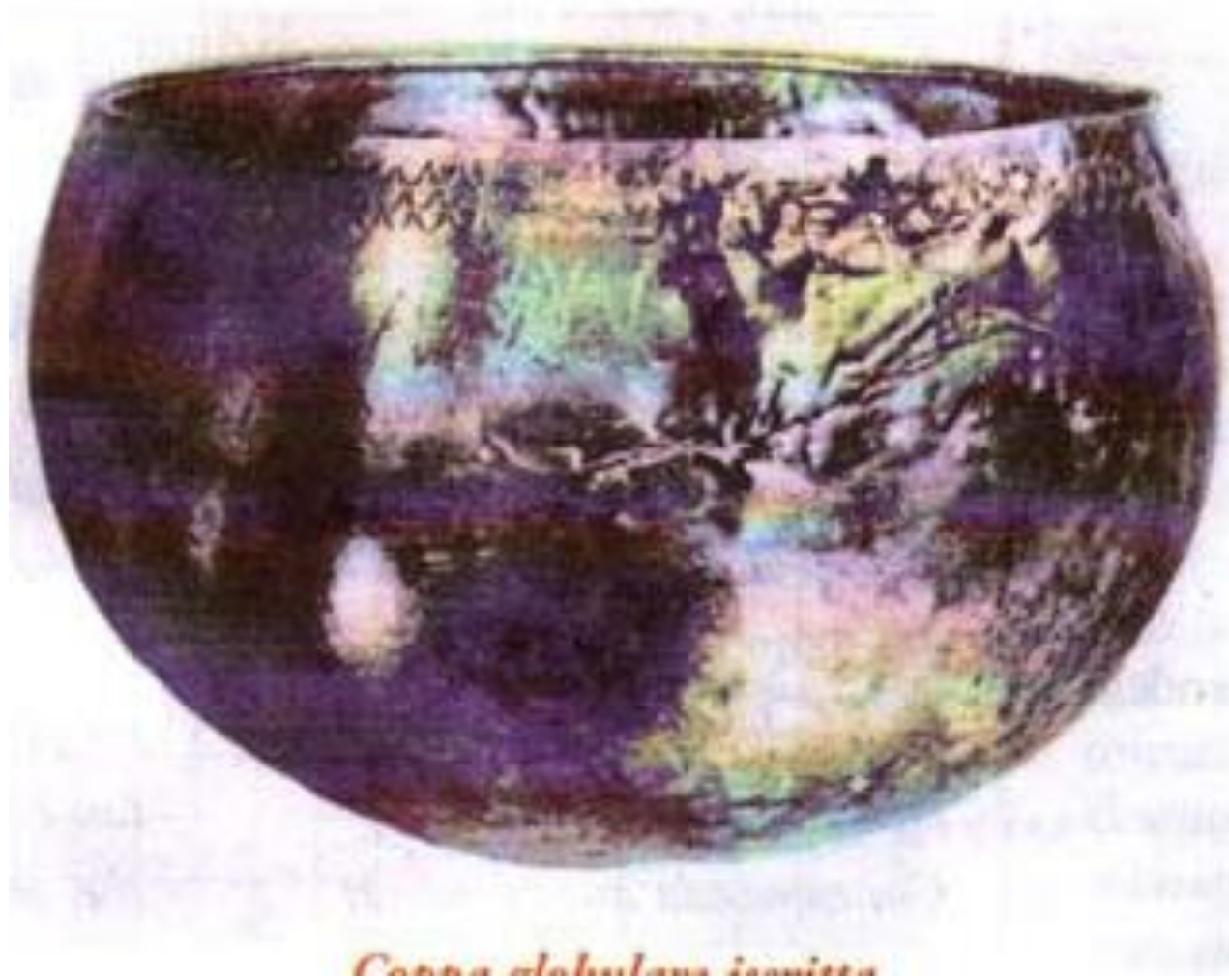


The Gabii vessel

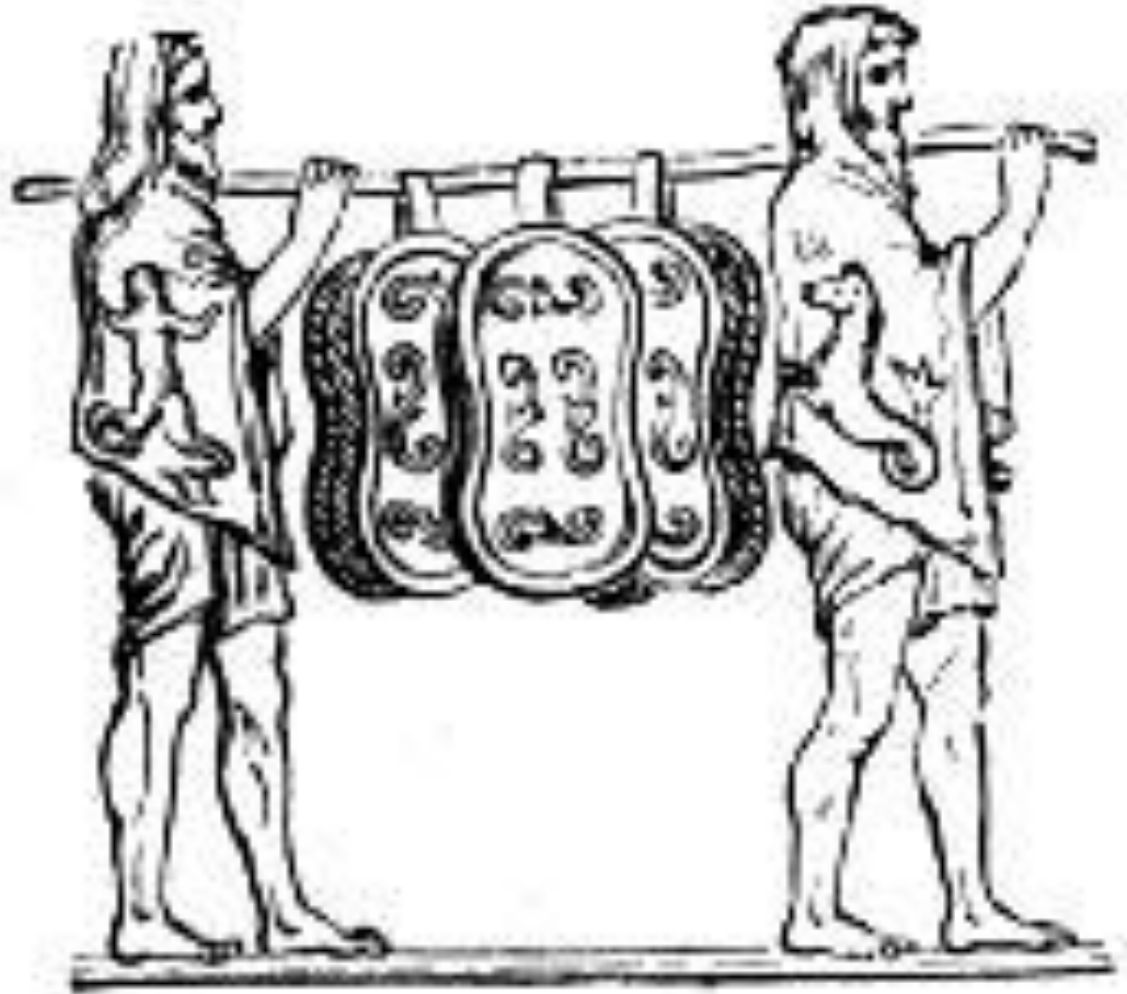
The Gabii Vessel



Vetusia Silver Bowl



Salii carrying ancilia



The Manios Fibula



Transcription of Fibula

MH 104 WE DRE: TER: K ED

MH 104: WE DRE: TER: K ED: N N M A S 101

Close-up of Fibula



CIL 1².358 Ardea, ca. 330-300 BCE D]OMO FAMELIAI DONOM D[EDET? ---].





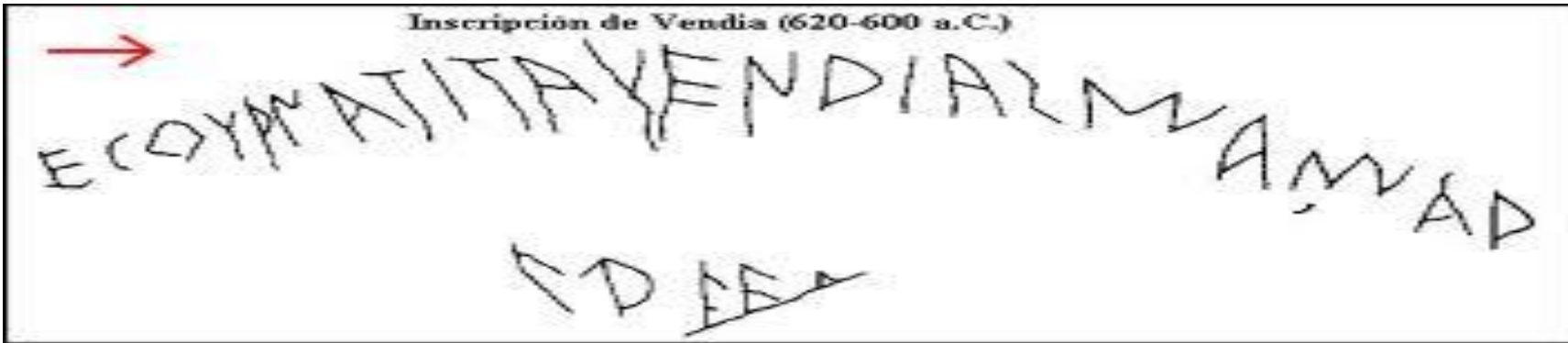
PAIYET #STITA

PAIYET #STITA

Caere, Present-day Cerveteri, ca. 600 impasto pithos, Museo di Villa Giulia



Inscripción de Vendia (620-600 a.C.)

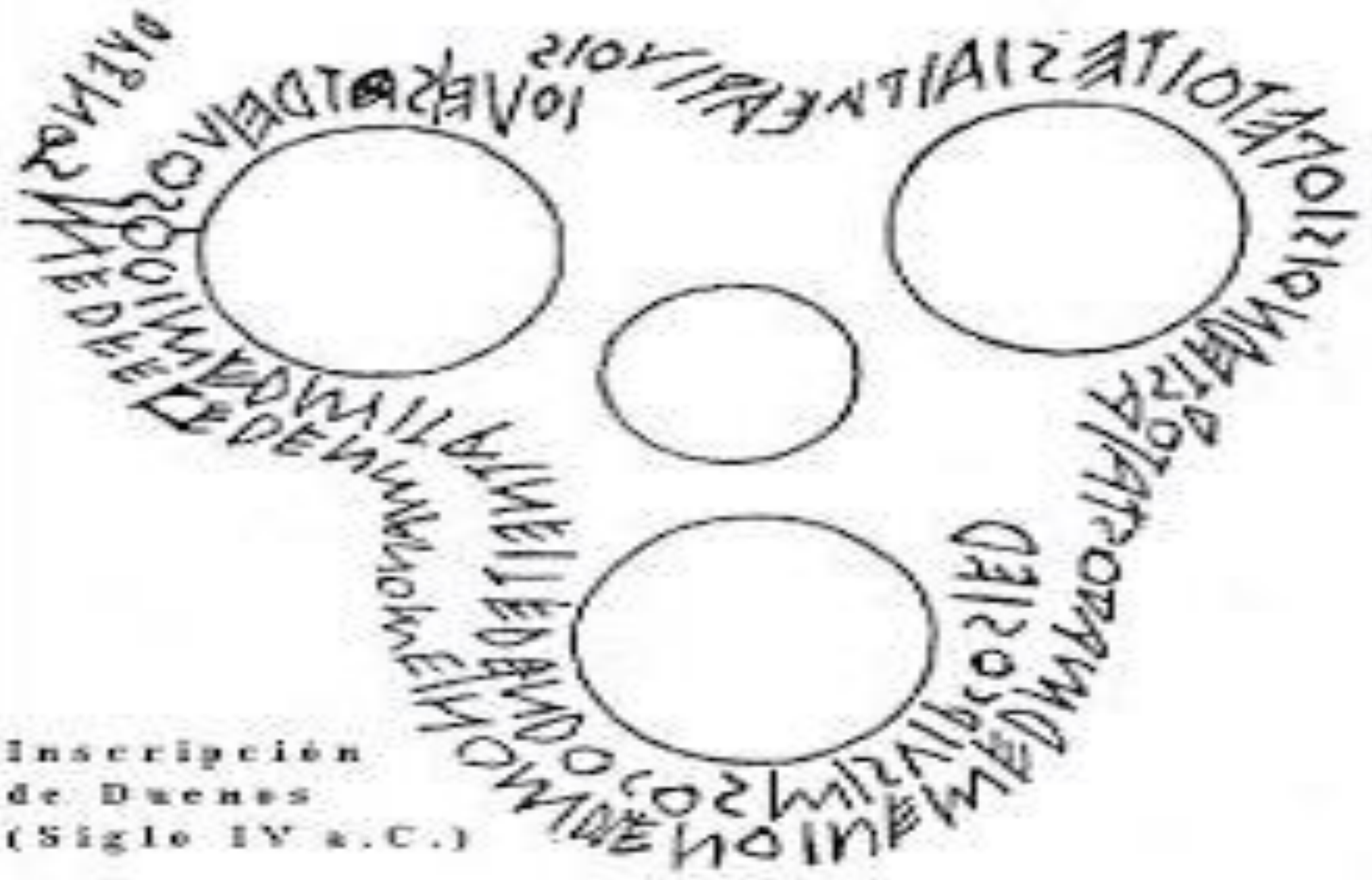


Typologically similar kernoi of late Villanovan (left) and 4th century date (right).





Inscripción
de Duques
(Siglo IV a.C.)





מאפינס
מאפינס

מאפינס

מאפינס

- The young man and woman are playing *ludus duodecim scriptorum*. The man is about to move his piece with his right hand and to throw the dice with his left. The woman says “I will beat you.” and the man agrees “I think so”. The last letter of the first section of letters has been read as D, but it is distinct from the other two D’s, not closing the loop. It is a defective R. See Franchi De Bellis 2005:27.



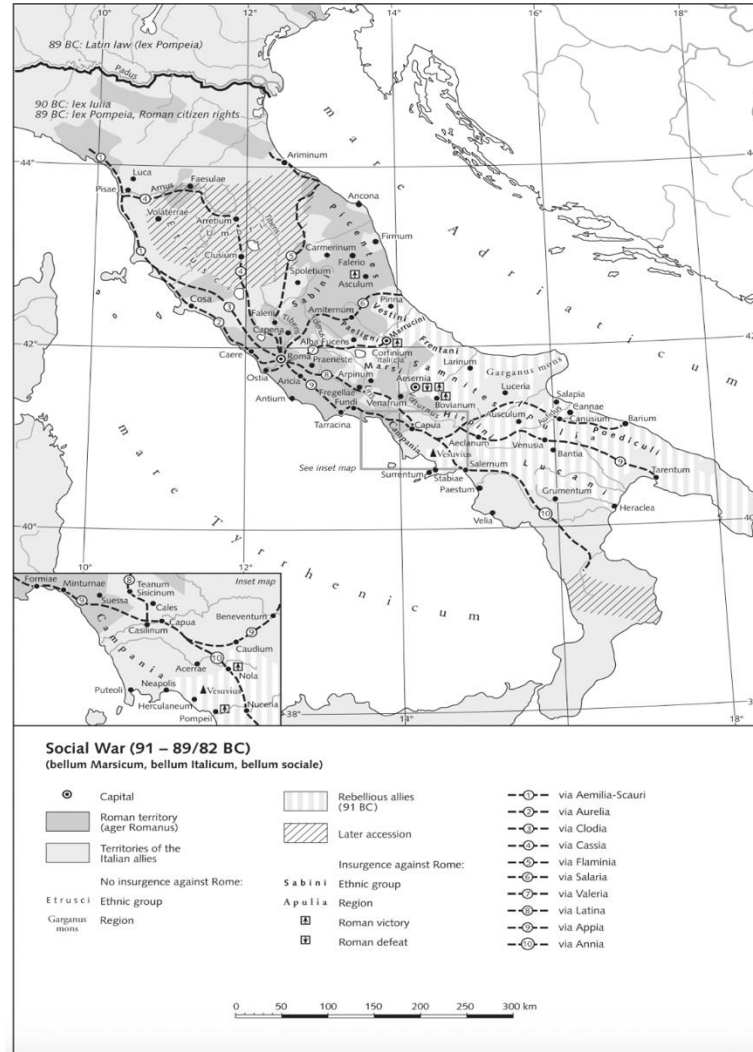
CISTA FICORONI

DINDIA MACOLNIA FILEAI DEDIT NOVIOS PLAUTIOS MED ROMAI FECID



DINDIA·MACOLNIA·FILEAI·DEDIT·
NOVIOS·PLAUTIOS·MED ROMAI·FECID

91-88 Bellum Marsicum AKA Bellum Sociale “The Social War”(last gasp of the Italic peoples)



Víteliú



The last gasp of Oscan writing

Campania / POMPEI 46

Pompei

References *ST Po* 66; *Ve* 63



RERER·STRVAH·UDASAT ER
HIER·TAKHVAR·VURAHHIAH
AIAH·TDBAH·EKPK·KAMBEH
C·CHIKIR·HAD·KE·VRS·T·VD·VAHU
HEHTVR·RERER·ER·EKETIVCAR
CEDEN·VAH·VANNAT·T·DRTAR
C·VARDAR·C·ETIV·C·VANDH

Inscripción dedicatoria (siglo II a.C.)

Gubbio from the site of the Roman amphitheater





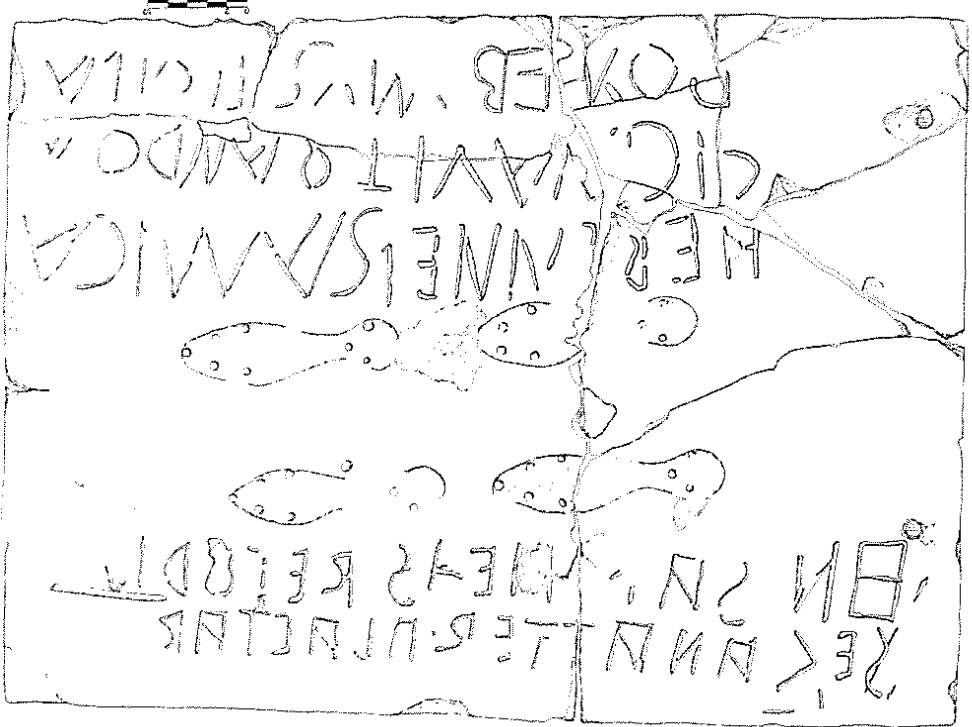
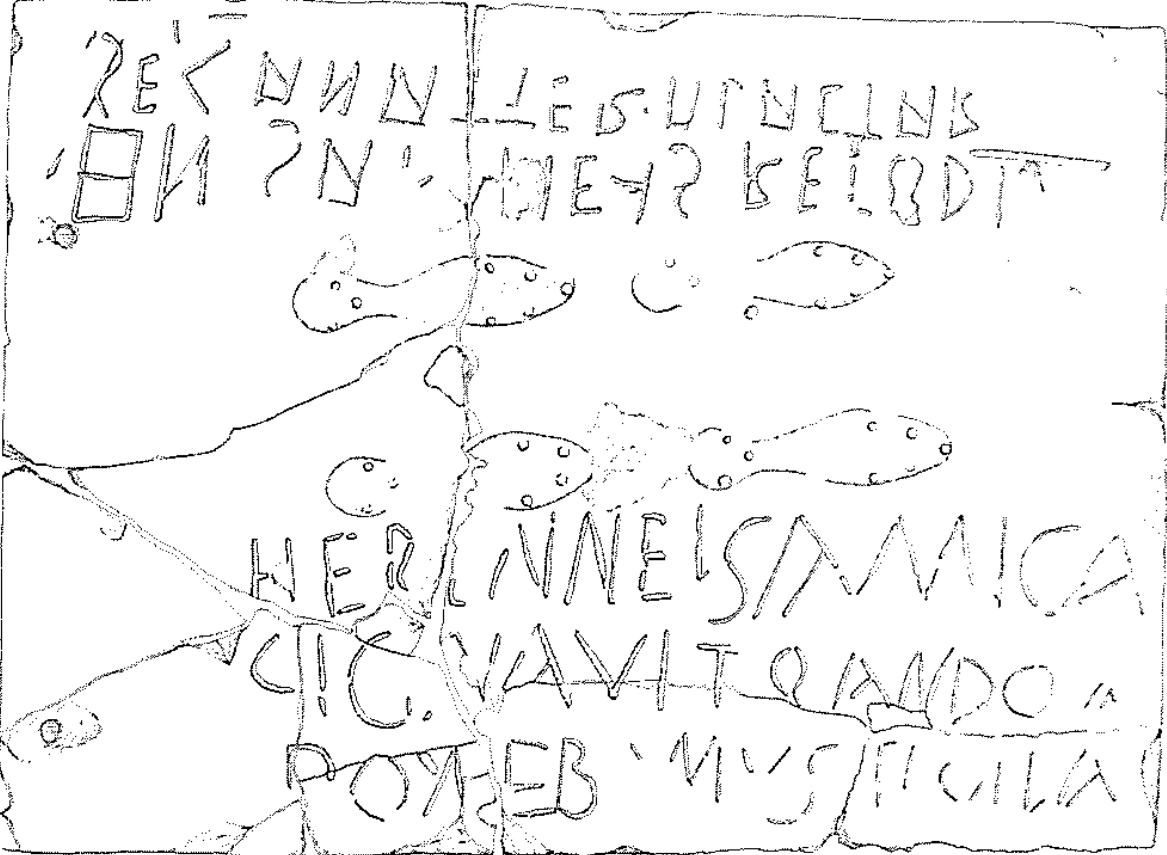
Palazzo dei
Consoli

The Umbrian Alphabet from Poultney 1959:25.

Native alphabet		Latin alphabet	
A	a	A	<i>a</i>
B	b	B	<i>b</i>
K	k	C	<i>c</i>
		D	<i>d</i>
E	e	E	<i>e</i>
8	f	F	<i>f</i>
		G	<i>g</i>
Θ	h	H	<i>h</i>
I	i	I	<i>i</i>
∇	l	L	<i>l</i>
H(Λ)	m	M	<i>m</i>
N	n	N	<i>n</i>
		O	<i>o</i>
1	p	P	<i>p</i>
		Q	<i>q</i>
0	r	R	<i>r</i>
9	r̄	RS	<i>rs</i>
2(M)	s	S	<i>s</i>
d	ç	Š	<i>š</i>
γ(0)	t	T	<i>t</i>
V	u	V	<i>u</i>
∩	v	X	<i>x</i>
#	z		



Detfri





ADAV: DEOTE: NEIL: EDV: ENVK: BDARD
V: LVE: VLV: BENVDENI: LDVSIKADENI
L: DVE: SI: SE: VESVD: KDV: BDARDV: ANI
LDVSIKADENI: DEOTE: KDV: EDV: EPK
ODTBA: RILIRIV: LVE: VLV: BENVDENI
LE: DEOTE: KDV: SI: SE: VESVD: KDV:
GOTELKIV: BEIA: BDARDK: VIE: KESVD:
KARDOV: EI: AIE: BDE: LEP: D: NAKVD: GVD
YNEKV: ABIA: NVAE: LIT: ED: LYSI
LVNI: KASVD: V: EI: AIE: VBA: SRA: V: G
LVNI: VNEKV: ABIA: NVAE: LIT: ED: VNI: ED
DEED: V: VNI: KASVD: V: EI: AIE: LVDIV
LI: AIE: V: VNI: KLV: ABIA: NVAE:
LE: ANI: EP: VKE: EIKR: SE: ANI: EP:
V: ANI: EP: V: K: K: V: L: ED: K: V: ANO
GARD: ANI: EP: V: EI: R: S: L: EN: S: I: D:
EI: N: V: R: EN: E: L: DE: ED: V: NI: K: S: V: D: V: S:
AP: V: K: D: A: I: B: D: A: V: ANI: EP: V: L: DE: V: B: I: A:
B: V: S: I: DE: K: E: S: V: N: E: S: K: V: L: E: T: V: D: V: S: B: E: S: T: A:
E: V: ANI: V: O: E: P: T: A: P: B: E: D: V: NI: S: I: L: V: A: L: E:
M: I: B: I: P: V: G: N: I: S: I: A: K: D: V: V: D: E: S: T: V:
E: V: L: A: N: I: V: D: O: E: R: E: Y: NI: A: R: K: V: L: V: N: E:
L: E: D: A: K: I: E: V: V: R: K: V: D: E: S: T: V: L: V: A: P: K: E: P: E:
I: O: E: R: E: Y: NI: V: D: E: S: V: I: E: S: I: A: R: K: D: V:
K: V: D: A: I: L: D: E: O: R: B: I: A: L: I: P: E: V: D: K: V: L: I: E: S: V: A:
B: V: S: I: E: I: K: R: A: S: E: ANI: EP: I: D: E: S: V: A:
Y: K: I: S: L: E: N: S: I: D: V: A: I: S: I: L: V: A: L: E:
F: V: I: K: B: O: A: Y: D: ANI: EP: I: D: V: O: P: E: R: I:
ANI: EP: I: D: V: A: I: S: I: L: V: A: L: E:

SI:
NY: O: EDI: B: I: E: R: A: N: V: V: V: A: P: B: E: D: V: D: E:
B: E: N: V: D: E: N: I: A: P: B: E: D: V: D: E: E: D: V: L: E: I: V: D: K: V: D:
A: N: I: EP: I: V: L: E: S: V: D: V: K: A: D: V: L: V: D: E: V: V:
A: P: B: E: D: V: D: E: S: I: L: A: N: I: A: V: A: R: A: B: O: A: D: V:
V: E: K: E: S: V: D: L: A: N: I: A: V: A: R:
L: O: T: E: L: K: I: V: G: E: I: A: B: D: A: R: D: E: K: S:

21:
NY: O: EDI: B: I: E: R: A: N: V: V: V: A: P: B: E: D: V: D: E:
B: E: N: V: D: E: N: I: A: P: B: E: D: V: D: E: E: D: V: L: E: I: V: D: K: V: D:
A: N: I: EP: I: V: L: E: S: V: D: V: K: A: D: V: L: V: D: E: V: V:
A: P: B: E: D: V: D: E: S: I: L: A: N: I: A: V: A: R: A: B: O: A: D: V:
V: E: K: E: S: V: D: L: A: N: I: A: V: A: R:
L: O: T: E: L: K: I: V: G: E: I: A: B: D: A: R: D: E: K: S:

SAI WIDDIENIA

SAI WIA

DEI ANCTIS